



SITE ADDRESS :  
RAJSHREE ELANZA, OPP. PRAMUKH BUNGALOWS,  
NEW RANIP, AHMEDABAD.

CONTACT :  
+91 73836 28811

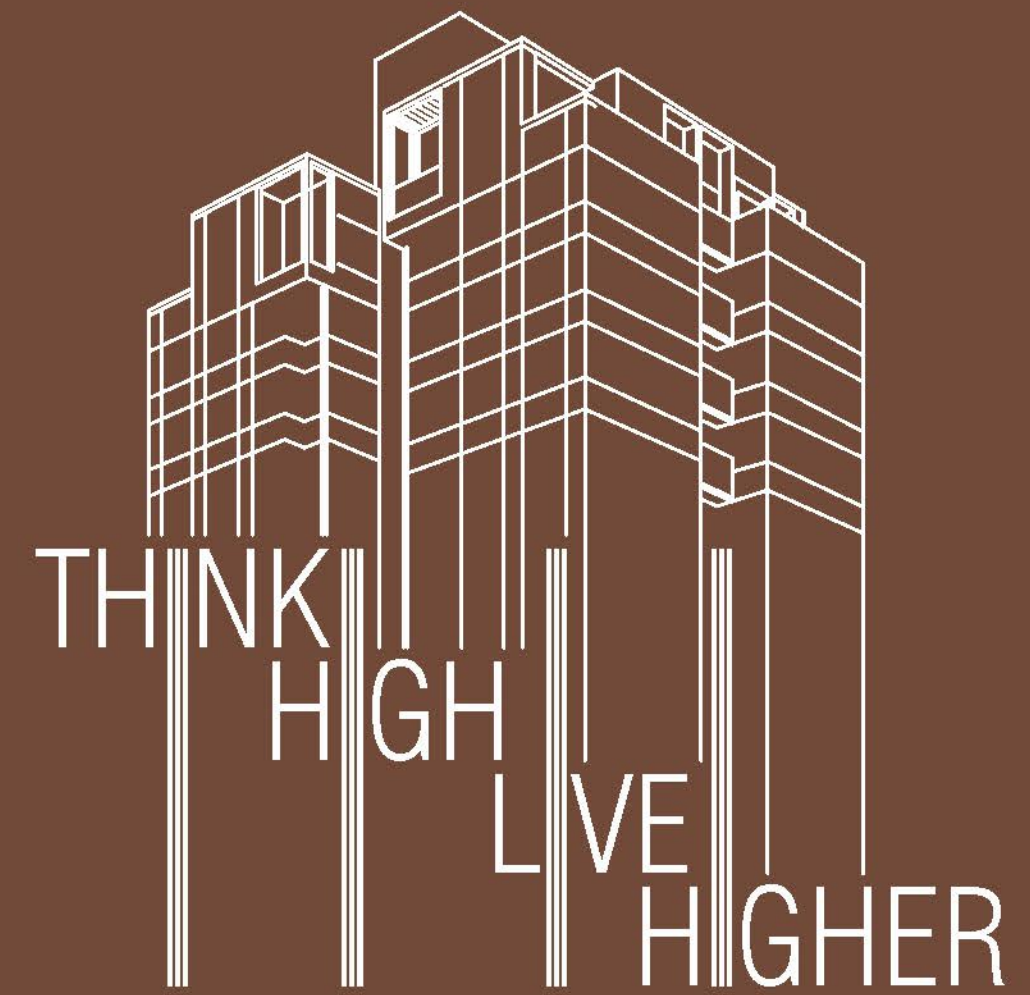


02

## 2 & 3 BHK ABODE & SPACE

RAJSHREE  
**ELANZA**  
Designed for natural living

Get aboard this luxurious lifestyle offered by rajshree elanza to become one of the few that deserve the elite life as much as you desire.





Our Expertise your **Lifestyle**

Rajshree Elanza presents scores of abodes that blend multiple amenities with a brilliant ambience.





# Layout Plan



## LEGENDS

- |                               |                           |
|-------------------------------|---------------------------|
| 1. LEAF GATE                  | 17. JOGGING TRACK         |
| 2. WATER BODY                 | 18. SCULPTURE             |
| 3. SECURITY CABIN             | 19. MULTI-GAME COURT      |
| 4. PICK-UP / DROP-OFF ZONE    | 20. INDOOR GAMES / GYM    |
| 5. EXIT GATE                  | 21. TOWER ENTRANCE FOYERS |
| 6. SECURITY TOILET            | 22. ELE. METER SPACE      |
| 7. BASEMENT ENTRY             | 23. HOLLOW PLINTH PARKING |
| 8. COMMUNITY TOILETS          | 24. SKATING RING          |
| 9. AMENITY AREA ARRIVAL PLAZA | 25. SR.CITIZEN SIT-OUT    |
| 10. CLUB HOUSE                | 26. TERRACE PARTY SPACE   |
| 11. PARTY LAWN                | 27. BAND STAND            |
| 12. WOODEN DECK               | 28. FUNCTION STAGE        |
| 13. YOGA DECK                 | 29. GAZEBO                |
| 14. UTILITY SPACE             | 30. OPEN SERVICE PANTRY   |
| 15. KIDS PLAY AREA            | 31. PANTRY / STORE        |
| 16. TODDLERS PLAY AREA        | 32. MALE / FEMALE TOILETS |

ELE. SERVICES

30.00 MT. WIDE ROAD

18.00 MT. WIDE ROAD



# 1st Floor Plan



# 2nd & 3rd Floor Plan





### 4th Floor Plan

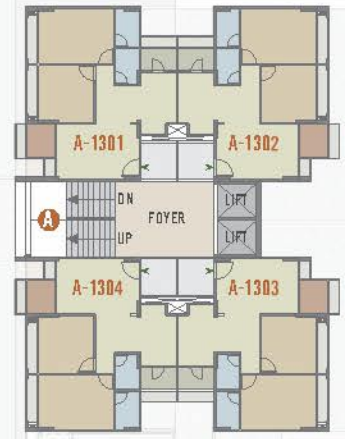


### 5th To 12th Floor Plan

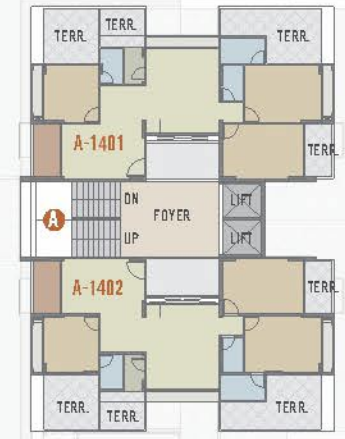
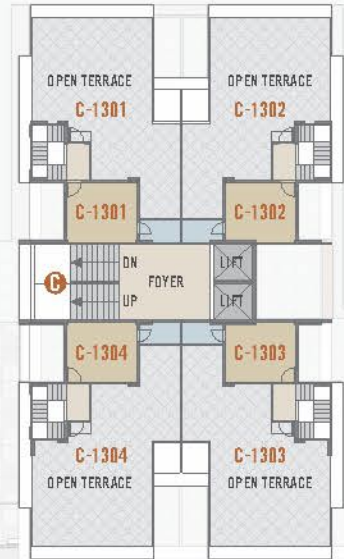
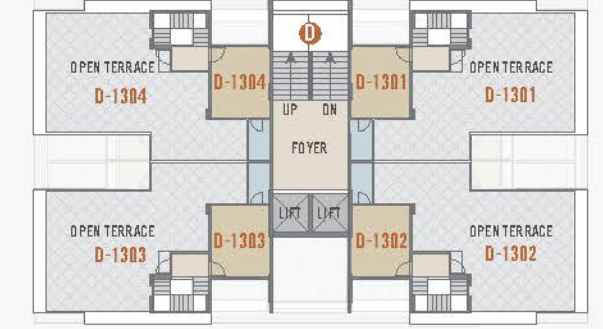




### 13th Floor Plan



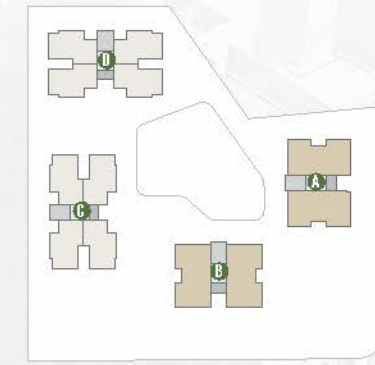
### 14th Floor Plan





Block - A & B

**— 2 BHK —**  
Unit Plan



Block - A & B

**— 3 BHK —**  
Pent House Plan



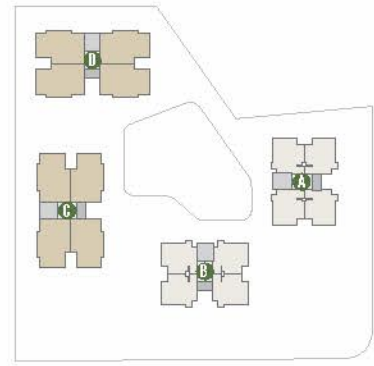




Block - C & D

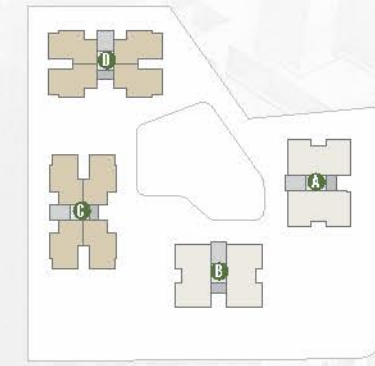
**— 3 BHK —**  
Unit Plan





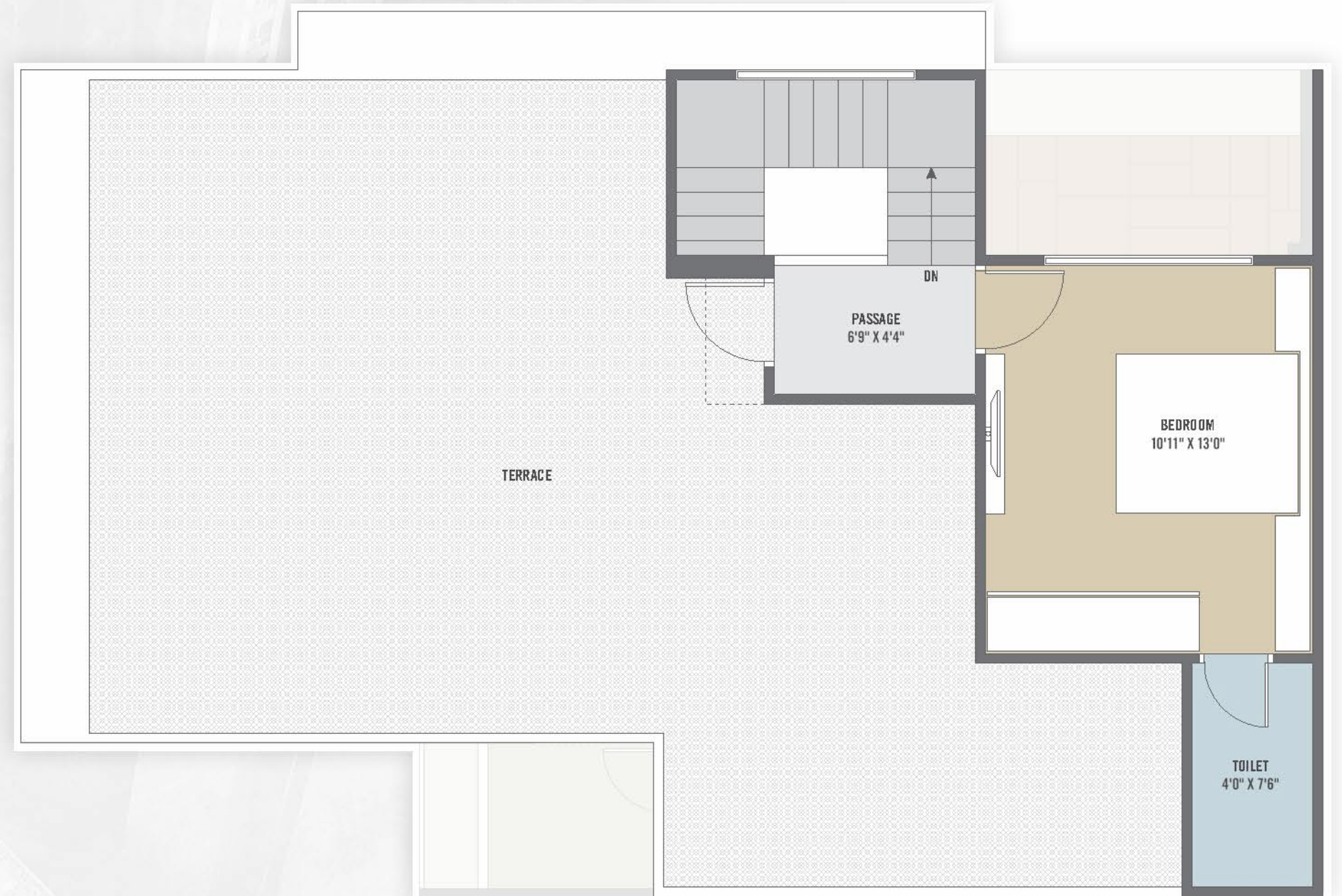
Block - C & D

**— 3 BHK —**  
Lower Pent House Plan



Block - C & D

**— 3 BHK —**  
Upper Pent House Plan





**Designed for Natural Living**





ENTRANCE GATE



GAZEBO



MULTI-GAME COURT



24 HRS SECURITY



CLUB HOUSE



INDOOR GAMES



PICK UP & DROP OFF ZONE



PARTY LAWN



SKATING RINK



HIGH SPEED ELEVATORS



GYM



YOGA DECK



24 HRS WATER SUPPLY



SENIOR CITIZEN SIT-OUT



KIDS PLAY AREA



PARKING



JOGGING TRACK



TODDLERS PLAY AREA



LANDSCAPE GARDEN



ELEGANCE ENTRANCE FOYER



POWER BACK-UP GENERATOR



RAJSHREE  
**ELANZA**  
Designed for natural living

Our world is your **Playground**

Ideal & breathtaking location, spacious & luxurious design quality construction, ultra modern club amenities & much more.



# Specification

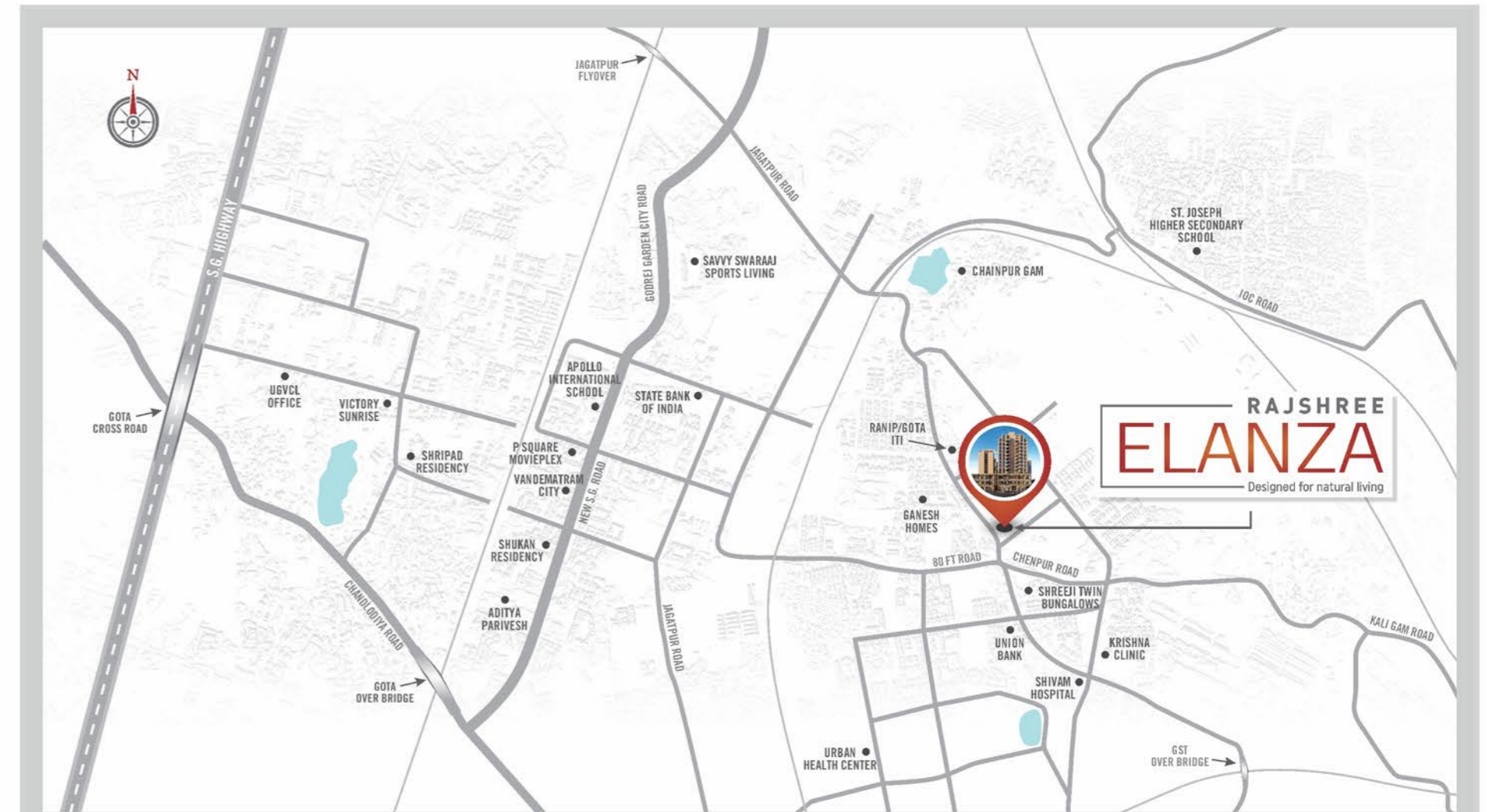
<b>FLOORING</b>		VITRIFIED Tiles in Living & Dining Areas, Kitchen and all Bedrooms. Kota Stone Or Similar in Wash Area.
<b>KITCHEN</b>		Polished Granite Platform With Stainless Steel Sink. Glazed Tile Dado up to Lintel on wall Above kitchen Platform.
<b>DOORS</b>		Decorative Veneered Finished Main Door with Wooden Frame. Painted Flush Doors in All Bedrooms and Bathrooms with Wooden Frame.
<b>WINDOW</b>		Fully Glazed Powder Coated Sliding Aluminium Windows.
<b>COLOUR</b>		Internal : Single Coat Mala Plaster with Putty Finish. External : Double Coat Mala Plaster with Acrylic Paint.
<b>ELECTRIFICATION</b>		Concealed Copper Wiring With Modular Switches. Adequate Points A.C. Points in Bedrooms, Geyser Points in Bathroom T.V. and Telephone Points in Drawing Room.
<b>BATHROOM</b>		Ceramic/ Glazed Tiles Upto Lintel Level in All Bathrooms. Cera or Equivalent Sanitary Ware & C.P Fittings.

## RULES & REGULATIONS

- Stamp Duty, Registration Charges, Legal Documentation Charges, GST, Maintenance Deposit, Torrent Charges and any other charges shall be born by buyer separately.
- Any Additional charges of Duties levied by government/local authority during or after the completion of the project will be born by the buyer.
- Internal changes shall be done with prior permission and shall be charged in advance.
- Changes in external elevation shall not be permitted.
- All right reserved by the developer for alternative/ modification/ improvement in specification/ changes in dimensions and planning shall be binding to all.
- Business practices leading to pollution, causing material damage to the building or members are not allowed in the premises.
- Irregular payments may attract interest or lead to cancellation of booking.

## DISCLAIMER

- This brochure and modal are not part of any legal documents.
- All dimensions/measurement given are unfinished and approximates.
- The photographs & artistic impression are for reference only. Actual building may vary from the representations mentioned in the brochure.
- This is not an advertisement within the meaning of RERA. This is not an offer, invitation or commitment of any nature. Recipients are advised to appraise themselves of the necessary and relevant information of the project prior to making any purchase decisions. All the specifications of the flat shall be as per the final agreement between the parties.
- T&C Applicable.



SITE ADDRESS : RAJSHREE ELANZA, OPP. PRAMUKH BUNGALOWS, NEW RANIP, AHMEDABAD.

CONTACT : +91 73836 28811

RERA NO. : PR/GJ/AHMEDABAD/AHMEDABAD CITY/AUDA/MAA08641/170621

WEBSITE : [www.gujrera.gujarat.gov.in](http://www.gujrera.gujarat.gov.in)

SCAN ME



DEVELOPER :



ARCHITECT :



STRUCTURE :

